
2019.2

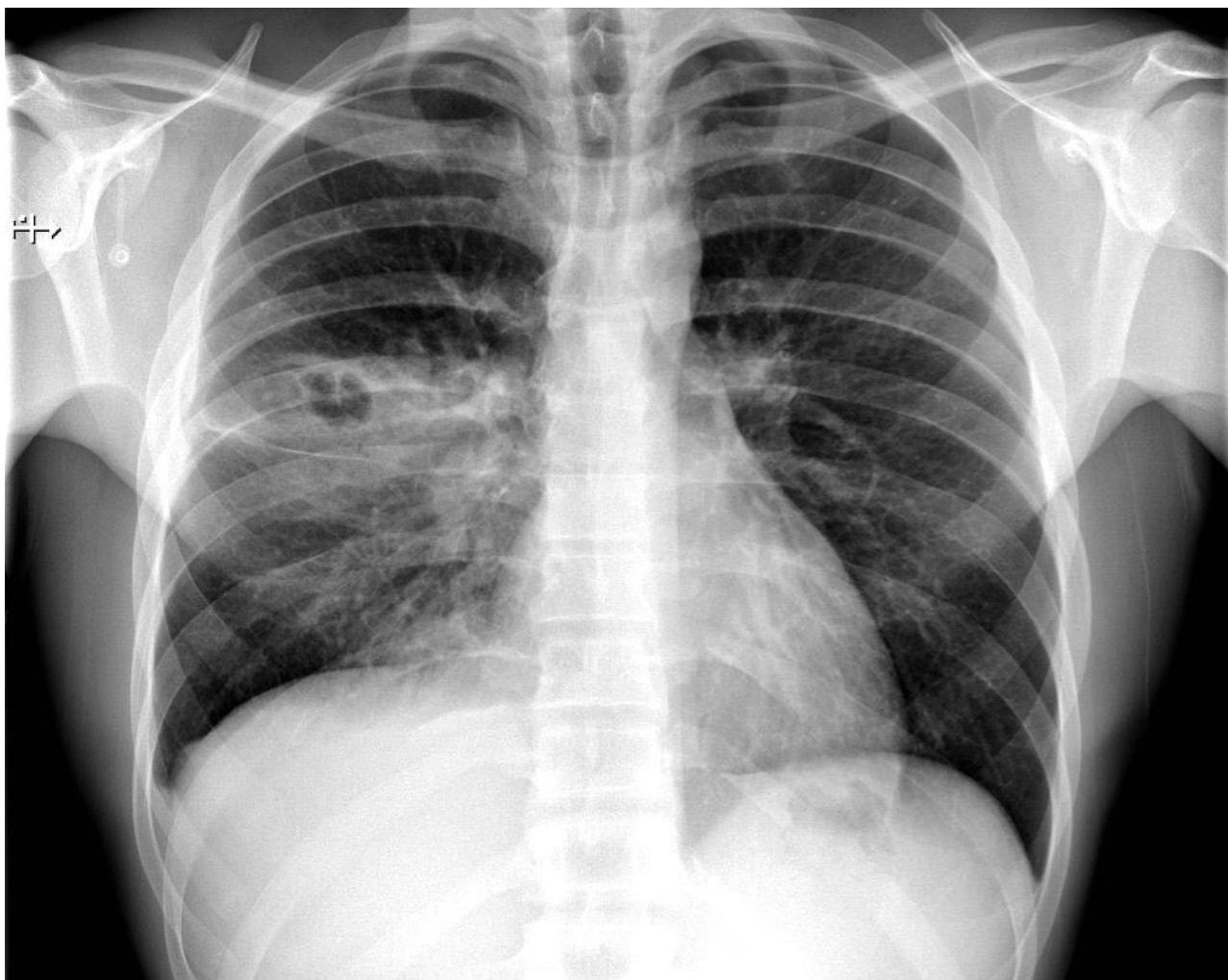
**South Australia
&
Northern Territory
Trial SAQ Exam
Props Booklet**

This page intentionally left blank

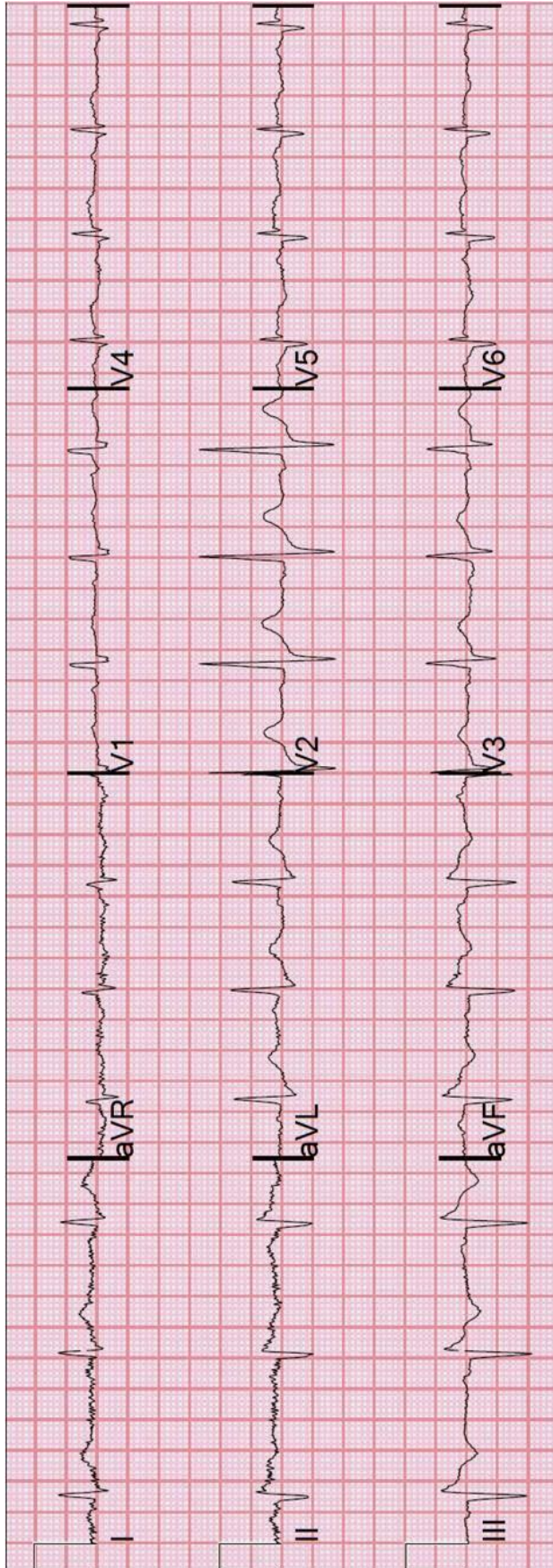
SAQ 1



SAQ 2



SAQ 3

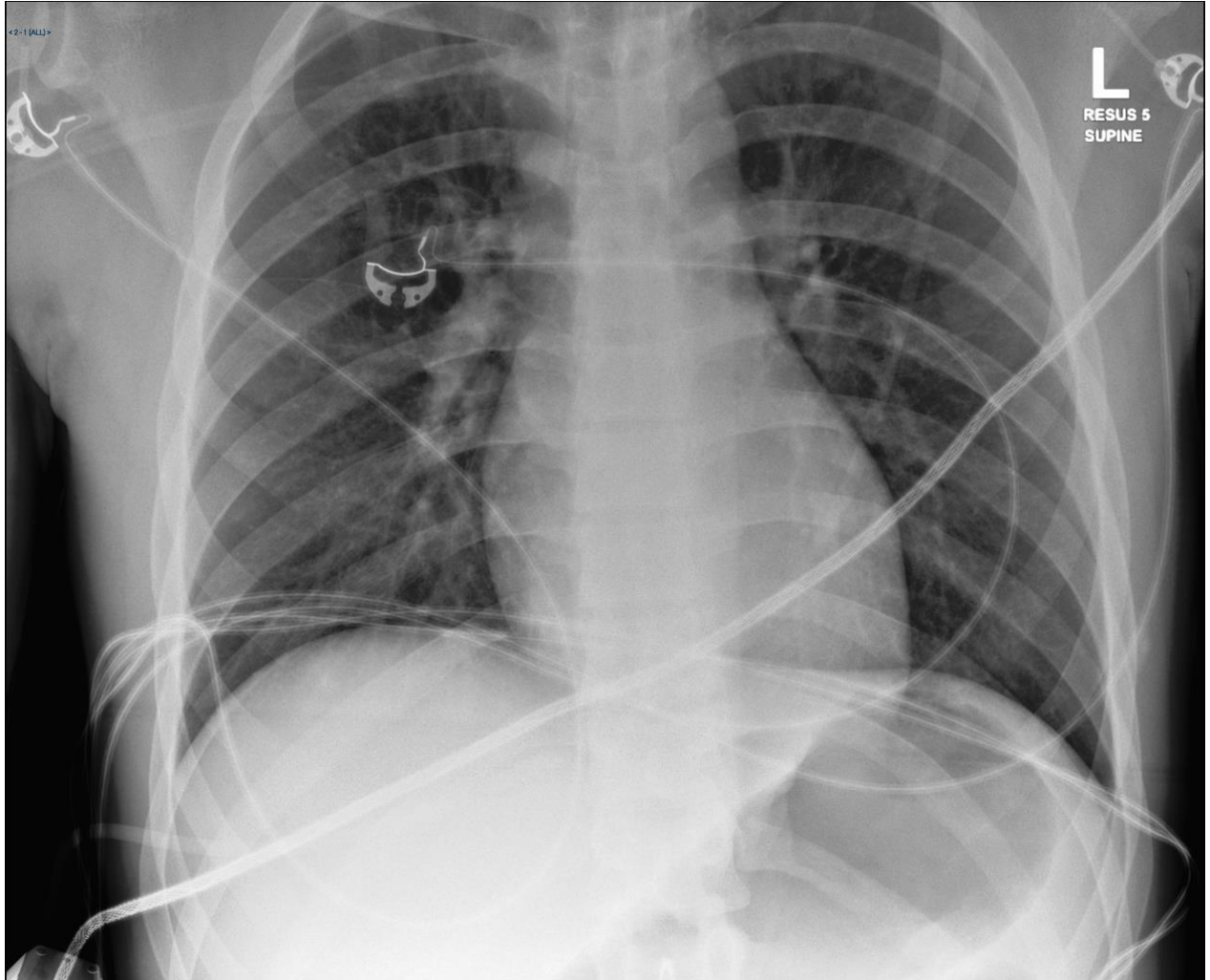


SAQ 5

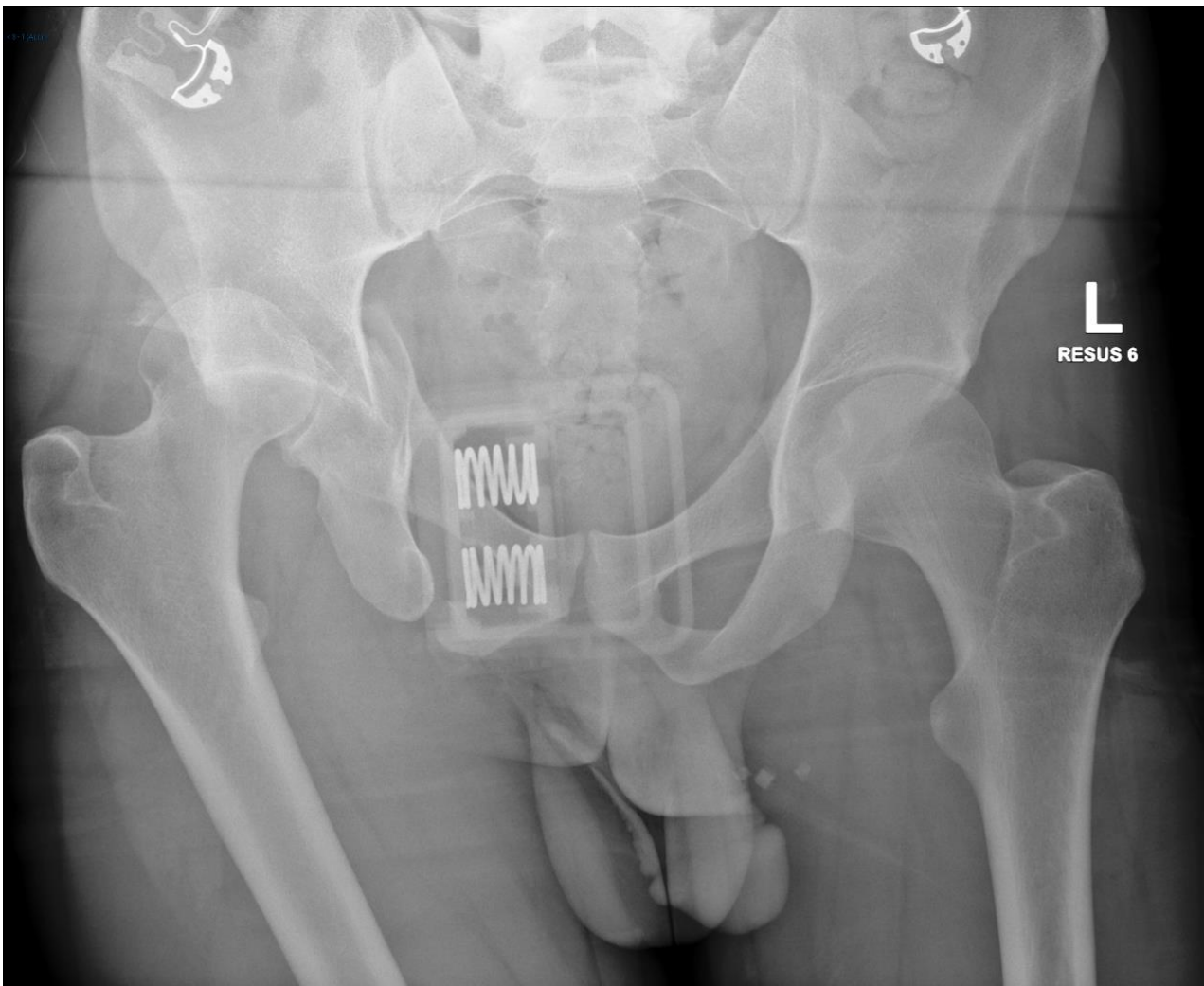


SAQ 6 (image 1/3)

<< Please note there are 3 images: CXR , Pelvic, XRay, RUQ FAST scan >>



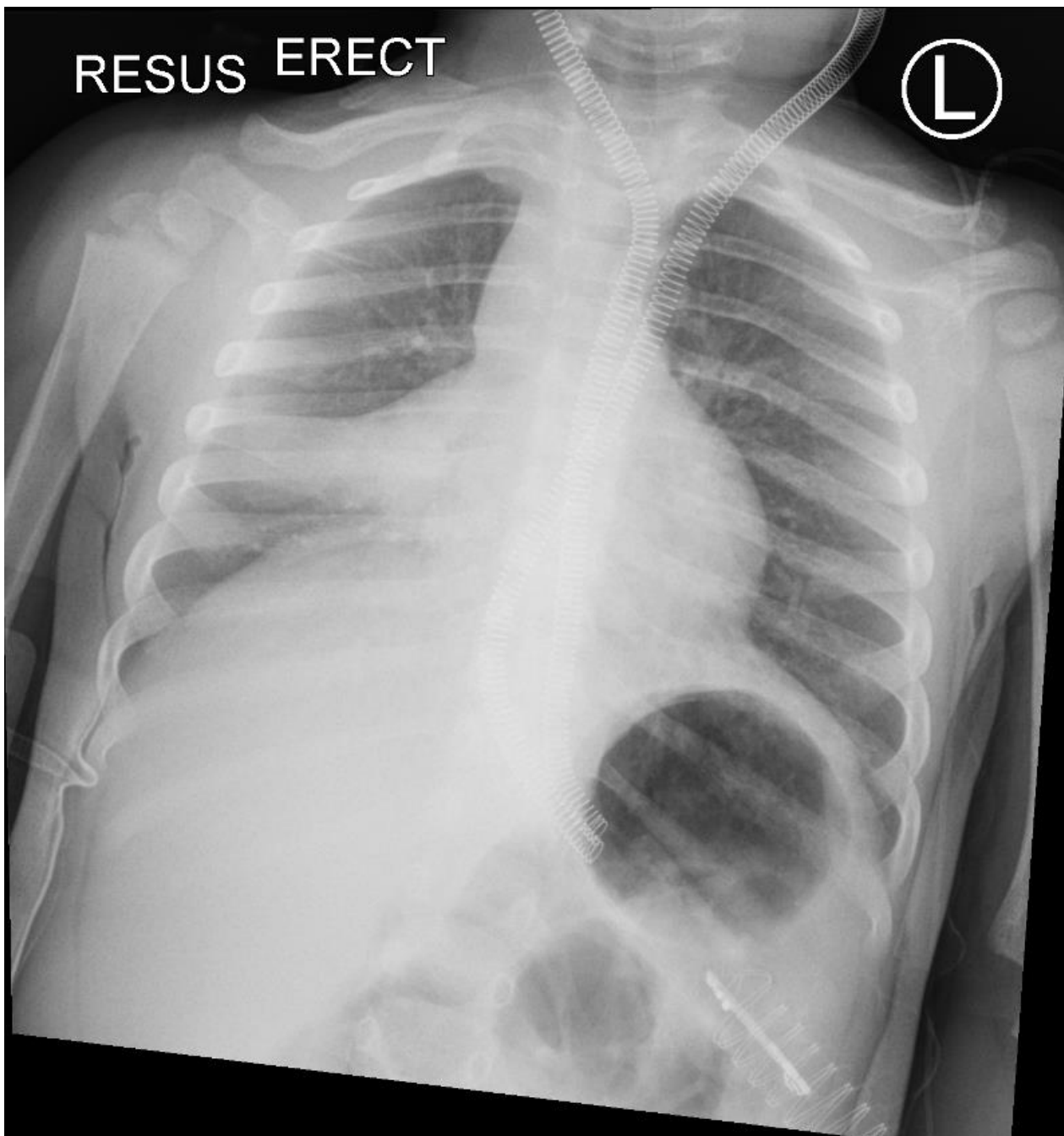
SAQ 6 (image 2/3)



SAQ 6 (image 3/3)



SAQ 8



SAQ 9 (image 1/3)

<< Please note there are 3 images >>



SAQ 9 (images 2 and 3 of 3)



SAQ 10

Arterial Blood Gas:

pH	7.39		(7.35 – 7.45)
PO ₂	175	mmHg	(80 – 110)
PCO ₂	30	mmHg	(35 – 45)
HCO ₃ ⁻	17.9	mmol/L	(22 – 28)
Base Excess	-7.9	mmol/L	(-3.0 - 3.0)
Sodium	143	mmol/L	(137 – 145)
Chloride	105	mmol/L	(100 – 109)
Potassium	4	mmol/L	(3.1 – 4.2)

SAQ 14

Complete Blood Examination (CBE)

Haemoglobin	52	(135-175)g/L
White Cell count	8.8	(4.00-11.00)	x10 ⁹ /L
Platelet count	240	(150-450)	x10 ⁹ /L
Red Blood Cells	3.7	(4.50-6.00)	x10 ¹² /L
Packed Cell Volume	0.37	(0.40-0.50)	/L
Mean Cell Volume	76	(80.0-98.0)	fL
Mean Cell Haemoglobin	25	(27-33)	pg
Mean Cell Hb Concentration	310	(310-360)	gL
Red Cell Distribution Width	12.0	(12.0-15.0)	%
Mean Platelet Volume	11.00	(9.50-13,00)	fL
Neutrophils	74%		
Neutrophils	6.4	(1.80-7.50)	x10 ⁹ /L
Lymphocytes	13%		
Lymphocytes	1.7	(1.50-3.50)	x10 ⁹ /L
Monocytes	4%		
Monocytes	0.3	(0.2-0.80)	x10 ⁹ /L
Eosinophils	1%		
Eosinophils	0.03	(0.02-0.50)	x10 ⁹ /L
Basophils	0.01%		
Basophils	0.01	(<0.01)	x10 ⁹ /L
Reticulocyte count	2.3%	(0.5-1.5% of RBC)	

SAQ 16



SAQ 27

